

# workspace

commercial furniture

Make ————— Space ————— Work

## Dot.Pro



SYDNEY ————— MELBOURNE ————— ADELAIDE ————— CANBERRA ————— BRISBANE

[www.workspace.com.au](http://www.workspace.com.au)





# Dot.Pro

Designed and manufactured by our long-standing Spanish partner, Forma 5, the Dot.Pro Chair is a proven task seating solution that has delivered outstanding performance in workplaces for many years. Its enduring success lies in the balance it strikes between refined aesthetics, advanced ergonomics and all-day comfort.

The Dot.Pro features a breathable mesh back paired with an upholstered seat, now enhanced with improved seat foam to provide greater comfort during extended periods of use. An innovative back support system combines highly resistant yet flexible materials, allowing controlled torsion in the upper back while maintaining firm, supportive contact at the lumbar region. This intelligent design encourages healthy freedom of movement while promoting correct posture throughout the working day.

Ideal for continuous work environments, the Dot.Pro offers a comprehensive range of ergonomic adjustments, including a synchro mechanism, adjustable lumbar support, 3D armrests and a seat slide to suit a wide range of users. A drafting chair option is also available, complete with a footrest ring for support.

AFRDI certified for durability and sustainability, the Dot.Pro Chair is a reliable, comfortable and stylish choice for modern offices.



## SPECIFICATIONS

### Range:

Task Chair  
Drafting Chair

### Features:

Synchro motion mechanism with seat slide and flexible backrest  
Adjustable/removable lumbar support  
Soft, double-wheeled castors for silent movement

### Colours:

**Black task chair:** black frame, black mechanism, black 3D arms, black polyamide base or aluminium base and black castors

**White task chair:** white frame, white mesh, black mechanism, black 3D arms or white fixed arms, white polyamide base and black castors





## SPECIFICATIONS (contd...)

### Options:

With or without arms

Black chair is available with black or grey mesh

### Base Options:

Black/white polyamide base

Aluminum base

AFRDI approved black polyamide base

### Upholstery:

Available in a wide range of fabric, leather or vinyl for seat only

Coloured stitching available on request

### Accreditation:

AFRDI Blue Tick certified (when using AFRDI certified base)

AFRDI Green Tick certified

### Warranty:

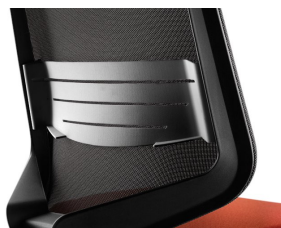
10 years



Black 3D Armrest



White Fixed Armrest



Adjustable lumbar support



Double wheel silent castors



Black polyamide  
dia: 690mm



White polyamide  
dia: 690mm



Polished aluminium  
dia: 690mm



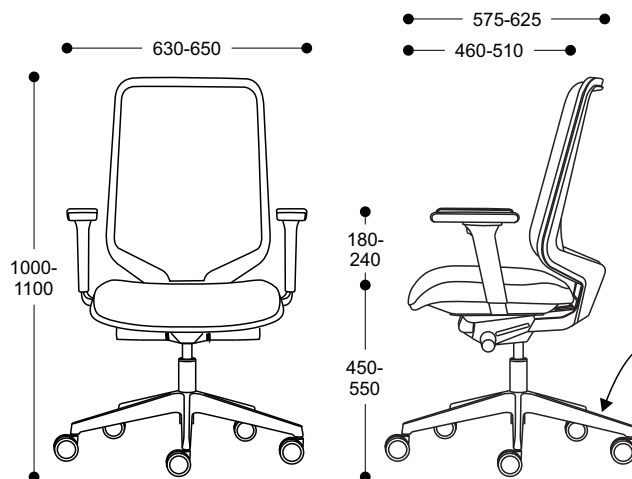
AFRDI accredited  
dia: 740mm



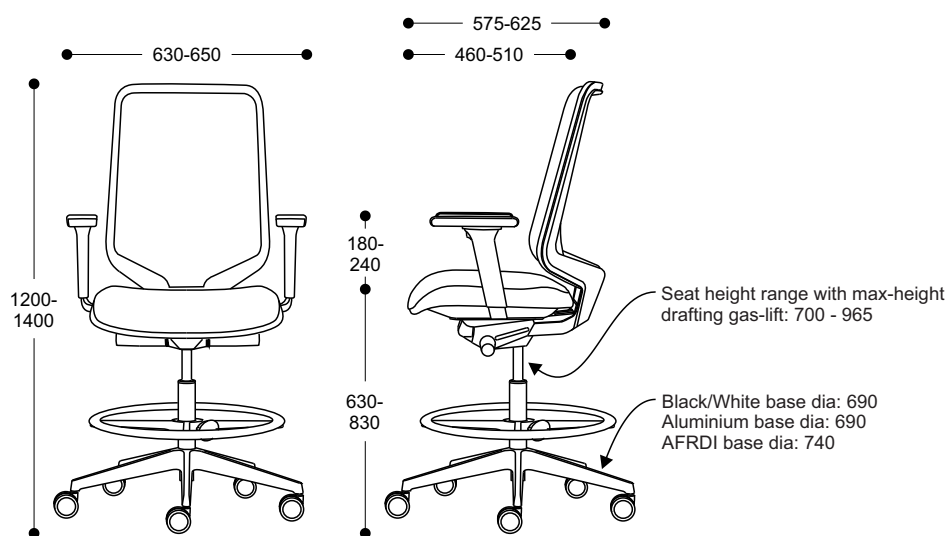


## DIMENSIONS

Dot.Pro Task Chair



Dot.Pro Drafting Chair



*\*Dimensions (+/-10mm)*