

# FREEDOM FR210 SERIES

Powering Flexible Spaces

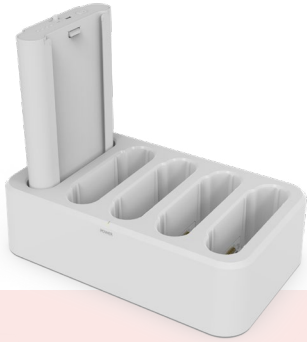


# FREEDOM FR210 SERIES

## Powering Flexible Spaces

The CMS Freedom FR210 is taking portable power to the next level. With most modern workplaces incorporating movable desks and collaboration areas, it is important that power can still be easily supplied to these areas. The FR210 enables power to be provided anywhere without the limitation of needing to core a floor and be tethered to electrical cables in floor boxes or grommets. From training tables and desks on wheels to lounges, loose furniture and portable AV, FR210 provides the solutions to suit the demands of the future of work.

If you're looking for a high-capacity high-output portable power solution, without the need to plug cables into walls, then look no further than the Freedom FR210 Series.



FR210CS - Charging Station



FR210DS - Docking Station



FR210PB - Power Bank



FR210PBPH - Power Bank with Handle

## Colours Available

● Black ○ White

## Key features

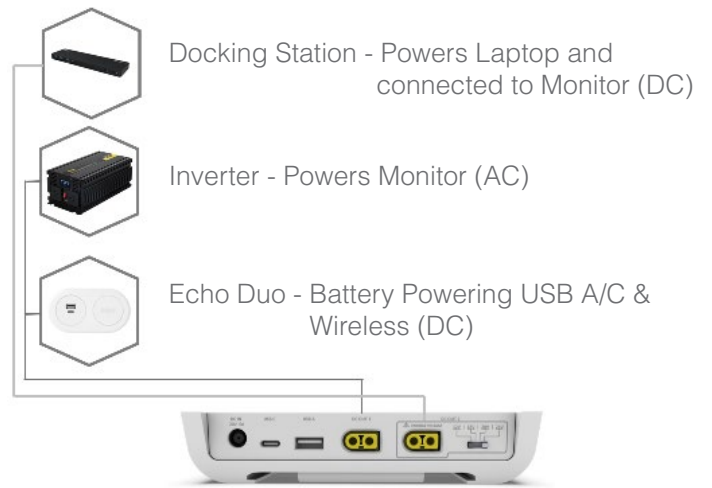
- Delivery of power via DC, USB C and USB A outputs
- Stackable Power Units capable of providing up to 630Wh (3x power banks) of power
- Fast and Easy Mounting of Docking Station
- Battery Life Indicator Light

# Application Environments

## Training/Flip Table



## Workstation



## Mobile Media Stand



## Products Compatible (Without Inverter)

### Using DC Output

The FR210 Power Bank provides DC Power and once connected to the Docking Station, it provides the ability for certain products to be powered using the 2x DC Output's located at the back of the docking station rather than needing an inverter to convert the power to AC. Specific XT60 leads can be provided to be connected from the Docking Station to one or more products listed below.



Echo Wireless Charger



Echo USB A/C Charger



Echo USB A/C + Wireless



THD 100 Docking Station



XT60 Plug to XT60 Socket



XT60 Y Splitter



XT60 Plug to DC Jack

### Example of Product Connections (Using Multiple Products Together)

DC Out 2	12V		Echo Series Wireless, A/C, A/C + Wireless		CMS Inverter	
	18V					
	20V					THD-100
	24V					
DC Out 1	17-25.5V					

## Products Compatible (With Inverter)

### Converting DC to AC Power

As the FR210 Power Bank is designed to provide DC Power, a CMS inverter is required when you need to connect to a GPO. Once you add an inverter into the FR210 connection process, the possibilities of products within our CMS range is expanded greatly from a wireless product to a power rail or in-desk unit.

View some of these products below:



CMS Inverter



Nova & Viva Power Rail



Athena Power Rail



Zeus Power Rail



Echo Module



KonexUS Module



Blinky Module



Executive Box



GPO's



Neo Box

## Product Details







### FR210 Battery & Charger

	<b>FR210PBP**</b>	1x 118W USB-A/C PD Power Bank (Push Button Release)
	<b>FR210PBPH**</b>	FR210 Power Bank with Handle - Push Button Release
	<b>FR210PBK**</b>	1x 118W USB-A/C PD Power Bank (Key Release)
	<b>FR210PBKH**</b>	FR210 Power Bank with Handle - Key Release
	<b>FR210DS**</b>	1x Docking Station With Multiple Outputs
	<b>FR210CS**</b>	1x Charging Station + 150W Power Supply With 10A 3-Pin Plug

### FR210 DC Leads

	<b>FRLA10BK</b>	XT60 Plug to XT60 Socket, 1000mm – Black
	<b>FRLB10BK</b>	XT60 Plug to 5.5 x 2.5 DC Jack Plug, 1000mm – Black
	<b>FRLC10BK</b>	XT60 Plug to 3.5 x 1.3 DC Jack Plug, 1000mm – Black
	<b>FRLD10BK</b>	XT60 Plug to 7.5 x 5 DC Jack Plug, 1000mm – Black
	<b>FRSYBK</b>	XT60 Y Splitter (1 in 2 out) – Black

**DC Echo Series**

	<b>FRECUAC**</b>	Echo USB A/C 140W Charging, 1000mm Black XT60 Lead to XT60 Socket
	<b>FRECW**</b>	Echo Wireless Fast-Charge Module (15W), 1000mm Black XT60 Lead to XT60 Socket
	<b>FREDA1U**</b>	Echo Duo - 1x GPO, USB A/C PD Fast Charge Module (140W Shared), 500mm TAG Lead for GPO, 1000mm Black XT60 to XT60 Socket
	<b>FREDUW**</b>	Echo Duo - 1x USB A/C PD Fast Charge Module (140W Shared), Wireless Fast-charge (15W), 1000mm Black XT60 Lead to XT60 Socket
	<b>FRETUWU**</b>	Echo Trio - 2x USB A/C Fast Charge Module (140W Shared), Wireless Fast-charge Module (15W), 1000mm Black XT60 Lead to XT60 Socket
	<b>FRETA1UW**</b>	Echo Trio - 1x GPO, USB A/C PD Fast Charge Module (140W Shared), Wireless Fast-Charge Module (15W), 1000mm Black XT60 Lead to XT60 Socket

**Notes:**

- \*\* Denotes Colour: Black (BK), White (WT)

**Freedom Batteries are for use with IT/AV Equipment Only**

## Product Specifications

### Power Bank (FR210 PBP /FR210 PB4)

Capacity	9,540mAh (206wh)
Charging Output	<b>USB-C Port</b> PD 100W (5V3A,9V3A,12V3A,15V3A,20V5A,) or QC3.0/2.0 18W ( 5V/3A,9V/2A,12V/1.5A)  <b>USB-A Port</b> QC3.0/2.0 18W ( 5V/3A,9V/2A,12V/1.5A)
Charging Total	Total 118W (PD100W and QC18W)
Protection	Over-Charge Over-Discharge Over-Current Over-Temperature Short Circuit
Charging Input Methods	USB-C Port When Factory Enabled/(Disabled By Default): PD 60W Max ( 5V,9V,12V,15V,20V) Charging Station Docking Station
Indicators	4pcs x LEDs White Colour
Size	L=251.8 W=151.4 H=38.1
Weight	1.54 kg
Compliance	IEC62133 & IEC62368 UL2056 CE-EMC (EN 55032, EN 55035) RoHS UN38.3 USB-IF(PD)

### Docking Station (FR210PS)

Input	7.4x5.0 DC Jack (To Recharge Units While Docked) 20v/5A
Output Ports	USB-C output : PD 100W (5V3A,9V3A,12V3A,15V3A,20V5A,) or QC3.0/2.0 18W ( 5V/3A,9V/2A,12V/1.5A). USB-A output : QC3.0/2.0 18W ( 5V/3A,9V/2A,12V/1.5A). DC OUT1 (XT60) : 18-25.2V( Battery voltage output directly) ,16-18A. DC OUT2 ( XT60) : 12V/18V/20V/24V,11A. Max combined output 150W - 1 docked, 350W - 2+ units docked
Docking Capability	Up to 3x FR210 Power Banks (630Wh)
Capacity Indicators	4x White LEDs To Indicate The Battery Level Of The Docked Power Banks.
Size	L= 275.9 W=152.2 H31.6
Weight	0.94 kg
Compliance	RCM (AS/NZS CISPR32) CE-EMC (EN 55032, EN 55035)

### Charging Station (FR210CS)

Input	7.4x5.0 DC jack : 20V7.5A
Max Power Banks	Up To Max 5x Power Banks.
LED Indicator	Always On When Power Available.
Charging Time	Charging Station – 5 Docked (DC Input Power 150W) : 9-10 hours Charging Station – 3 Docked (DC Input Power 150W) : 6-7 hours Charging Station – 1 Docked (DC Input Power 150W) : 2-3 hours
Size	L= 326.4 W=199.3 H=99
Weight	1.88 kg
Compliance	RCM (AS/NZD CISPR32) CE-EMS (EN 55032, EN 55035)

**Lithium Battery Disclaimer:** [Please click here for our Freedom Lithium Ion Battery Disclaimer.](#)